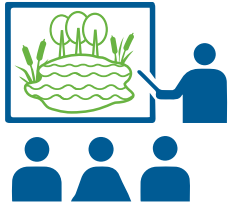


The Riparian Web Portal was designed to help Albertans build healthier riparian areas by providing a space to:



Explore resources and educational material that can enable landowners to adopt new restoration or conservation projects.



Browse data from the new satellite inventories through an interactive map.

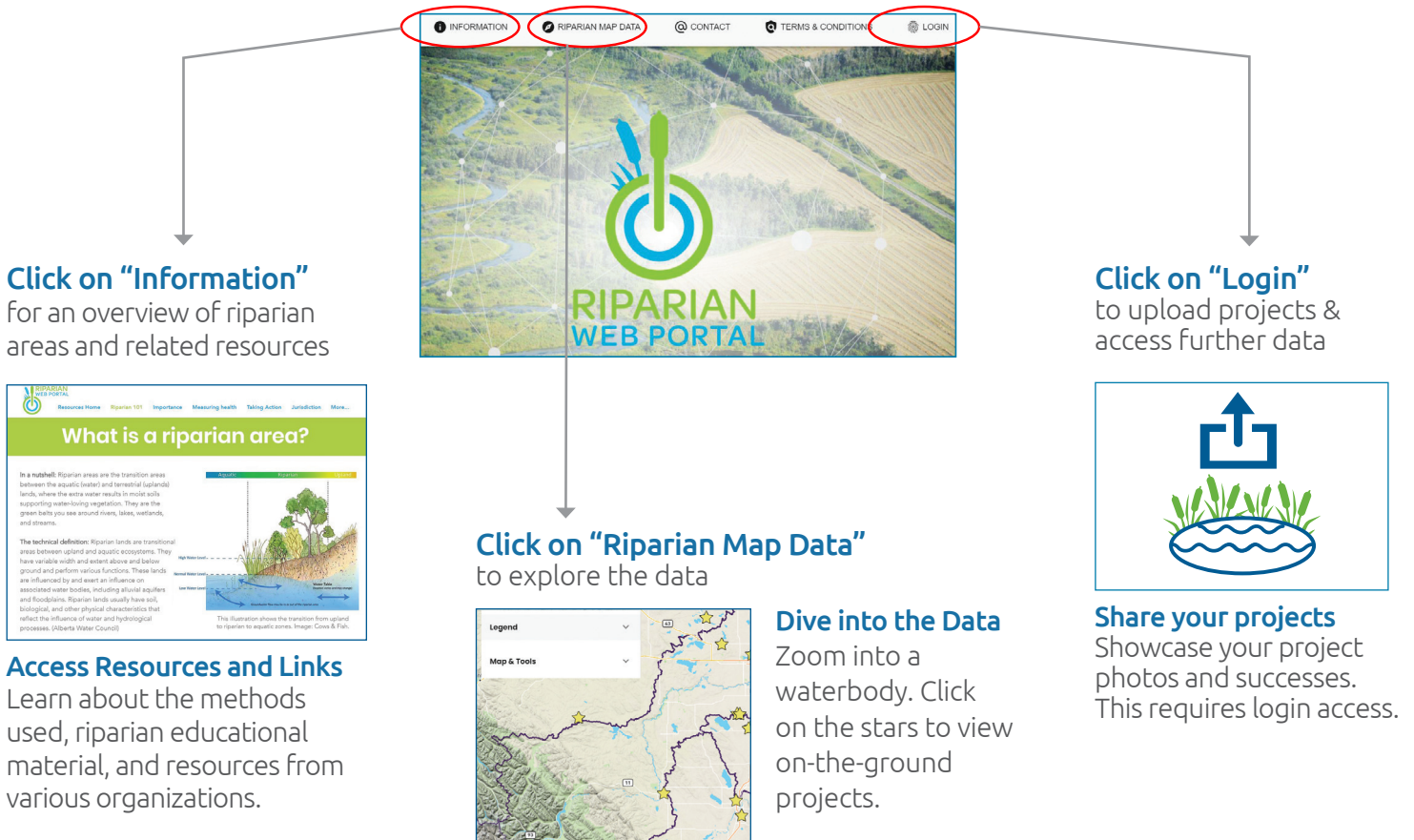


View and share examples of on-the-ground projects being completed by landowners and conservation groups.

The Riparian Web Portal is a collaborative project between several non-profit organizations, with support from the Government of Alberta.

Using the Portal: An Overview

Go to riparian.info to explore the portal. This is the landing page, which has 3 main categories.



The Information Tab



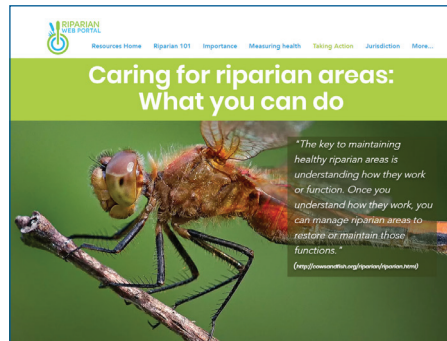
Information Landing Page

Go to these tabs to learn more:

- **“Riparian 101” & “Importance”** for definitions & why these areas matter
- **“Measuring Health”** for details about various methods used
- **“Taking Action”** for how you can get involved
- **“Jurisdiction”** for an overview of riparian governance

Using the “Taking Action” Tab

Whether you’re a lakeshore resident, agricultural producer, or municipal leader, you’ll find links to valuable information and contacts. You can search by user type or project category.



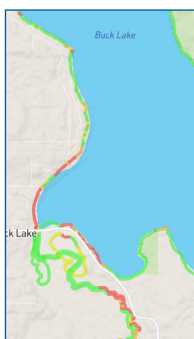
User-Based Resources

- Acreage owners
- Agricultural producers
- Lakeshore owners
- Municipal leaders
- Education for kids
- Community initiatives
- Recreational users

Project-Based Resources

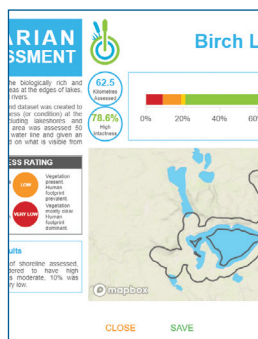
- Agricultural solutions
- Home solutions
- Planting
- General recommendations

Map Data



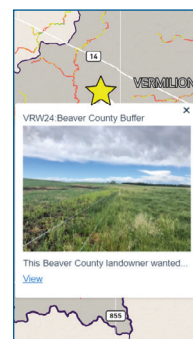
Zoom-in to view the data.

Multi-coloured lines represent intactness scores (refer to Legend). Use the “Map & Tools” menu to access different view options.



Use the “Summary Report” tool for specific intactness data.

Summarize data for waterbodies or whole watersheds with this tool. Intactness summaries can be downloaded.



Click on a star to view on-the-ground projects.

Learn about past and ongoing projects to conserve and restore riparian areas.

For more info on viewing data, please see the “Map Data Overview” Info Sheet.

Login Access



Login Access will give you access to:

- More detailed resolution data (ability to zoom in)
- Catchment pressure data
- Prioritization for conservation and restoration projects
- Add ongoing or completed riparian-related projects

If you’re a project manager, you can gain login access by taking the “Riparian 102: Where Data Meets Action” training session.